



Goldman Close, Bethnal Green, E2

BUTLER & STAG





**Spanning over two floors, this 851 sq.ft property offers versatile accommodation and bright and spacious interiors with a private garden and Summer house.**



- Two bedrooms
- One bathroom
- One W.C
- Split level
- Modern finish
- Private garden
- Summer house
- Parking permit
- Communal garden
- Lots of natural light

Benefiting from a porch entrance, the first floor comprises of two large double bedrooms, both of which features large fitted wardrobes a contemporary three piece bathroom with his and her sinks and a separate W.C.

The ground floor boasts a large kitchen/dining and reception room separated by a partition wall. Both rooms are bathed in a wealth of natural light because of the large bi-folding, floor to ceiling doors. The kitchen comes with fully integrated appliances, a utility area and ample room for entertaining dinner guests. There is considerable storage space under the stairs. The dining/reception area leads out to a charming, well kept garden that features an olive tree and a heated Summer house/home office. The property also benefits from access to a communal garden.

Goldman Close is a popular pedestrianised close just moments from a vast array of eateries and vibrant nightlife of Brick Lane. Some of London's most fashionable destinations including Columbia Road, Shoreditch, Hoxton and Spitalfields are also very close by. Transport links include nearby Shoreditch High Street (Overground) with Bethnal Green, Old Street and Liverpool Street stations all within walking distance.







## Goldman Close, E2

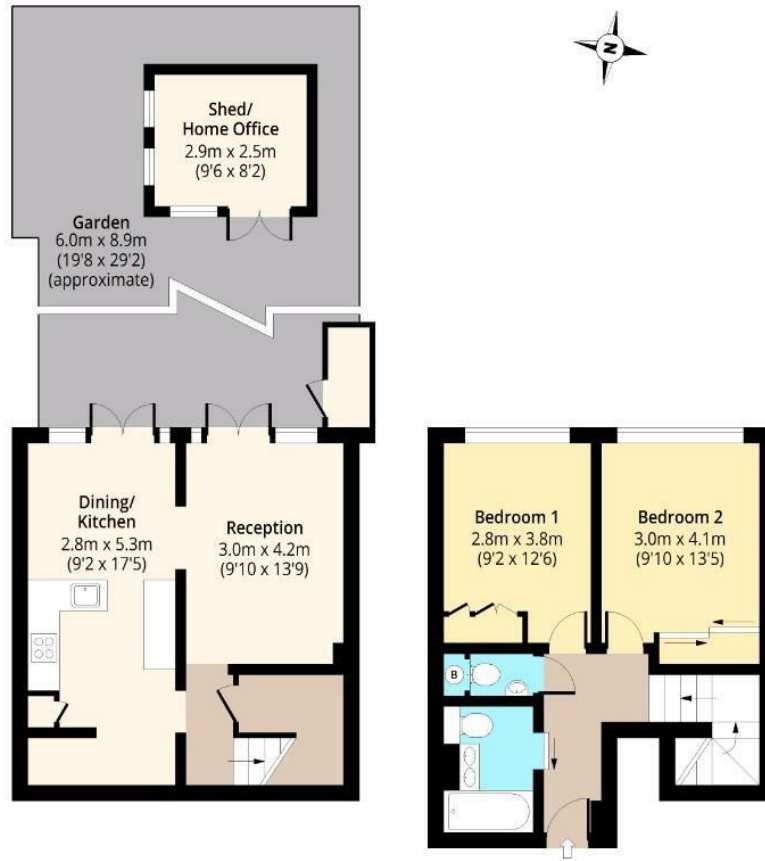


### Ground Floor

Approx. 39.00 Sq. meters (420 Sq. feet)

### First Floor

Approx. 40.02 Sq. meters (431 Sq. feet)



Total area: approx. 79.06 Sq. meters (851 Sq. feet)  
For illustration purposes only - not to scale  
[www.lpaplus.com](http://www.lpaplus.com)

**BUTLER & STAG**

☎ 020 8102 1236

🏠 508 Roman Road, Bow, London, E3 5LU

✉ [bow@butlerandstag.com](mailto:bow@butlerandstag.com)

[www.butlerandstag.uk](http://www.butlerandstag.uk)

IMPORTANT NOTICE - These particulars have been prepared in good faith and they are not intended to constitute part of an offer or contract. We have not performed a structural survey on this property and the services, appliances and specific fittings have not been tested. All photographs, measurements, floor plans and distances referred to are given as a guide and should not be relied upon.